

An alphabetical list of pharmaceutical companies, as well as manufacturers and suppliers of products and services for Medicinal Chemistry in Europe

| | | | | |
|----------------------------------|-----------------------------|---------|---------------------|----|
| 3B PHARMACEUTICALS GMBH | Magnusstraße 11 | 12489 | BERLIN | DE |
| 3M BELGIUM | Canadastraat 11, Haven 1005 | 2070 | ZWIJNDRECHT | BE |
| 3V-LSI | Rubicondreef 18 | 3561 JC | UTRECHT | NL |
| 4SC AG | Am Klopferspitz 19a | 82152 | MARTINSRIED | DE |
| 4SC DISCOVERY GMBH | Am Klopferspitz 19a | 82152 | PLANEGG-MARTINSRIED | DE |
| A & D INSTRUMENTS LTD | Abingdon Science Park | | ABINGDON OX14 3YX | GB |
| ABBVIE DEUTSCHLAND GMBH & CO. KG | Knollstrasse | 67061 | LUDWIGSHAFEN | DE |

ABCR GMBH & CO. KG



76187 Karlsruhe, GERMANY
Contact person: Dr. Anna-Maria Wilson
Tel: +49 721 95061-0
info@abcr.de
www.abcr.de

Gute Chemie. Welcome to **abcr**.

With **abcr**, you have access to over 100,000 products from the organic, organometallic and inorganic specialty chemicals area. These can be conveniently ordered via our webshop.

Our key business fields:

- > Catalogue business
- > Semi-bulk business
- > Bulk business
- > In-house production
- > R & D services
- > Small quantities supply

| | | | | |
|-------------------------------|---------------------------------|----------|----------------|----|
| ABSORPTION SYSTEMS | 440 Creamery Way Suite 300 | | EXTON PA 19341 | US |
| AC IMMUNE SA | EPFL Innovation Park Building B | 1015 | LAUSANNE | CH |
| ACCELA CHEMBIO | 9823 Pacific Heights Blvd #F | CA 92121 | SAN DIEGO | US |
| ACRAF S.P.A. | Piazzale della Stazione | 40 | POMEZIA | IT |
| ACROS ORGANICS | Janssen Pharmaceuticaaan 3a | 2440 | GEEL | BE |
| ACS | 1155 16th St., NW | 20036 | WASHINGTON | US |
| ACTELION PHARMACEUTICALS LTD. | Gewerbestrasse 16 | 4123 | ALLSCHWIL | CH |

ACTIVATE SCIENTIFIC



Am Mitterweg 12 - D-83209 Prien - GERMANY
 21A The Maltings, Roydon Rd - Herefordshire SG12 8HG - UK
Contact person: Christina Svoboda
info@activate-scientific.com
Tel: +49-(0)8051-9651660 / +44-(0)1279-843244
Fax: +49-(0)8051-9651661 / +44-(0)19208-72645
www.activate-scientific.com

Activate Scientific is a Catalogue supplier of multifunctional heterocyclic building blocks and complex scaffolds, specialized in the field of medicinal chemistry drug discovery. Our catalogue offers 32,000 great molecules for chemical diversity, which are readily available from stock through our offices in the UK and Germany.

| | | | | |
|-------------------------------|--------------------------------------|-----------|----------------|----|
| ACTIVE BIOTECH AB | Scheelevägen 22, P.O. Box 724 | 220 07 | LUND | SE |
| ACTIVE MOTIF | Avenue Franklin Roosevelt 104 Box 25 | 1330 | RIXENSART | BE |
| ADAMS HEALTHCARE | Lotherton Way Garforth | | LEEDS LS25 2JY | GB |
| ADVANCED CHEMISTRY DEV., INC. | 8 King Street East, Suite 107 | M5C 1B5 | TORONTO | CA |
| ADVION INC. | 10 Brown Road Suite 101 | NY 148500 | ITHACA | US |
| AETERNA ZENTARIS GMBH | Weismuellerstraße 50 | 60314 | FRANKFURT/MAIN | DE |

| | | | | |
|--|---|----------|-----------------------------|----|
| AFLEX HOSE LTD | Spring Bank Industrial Estate Watson Mill Lane - Sowerby Bridge | | HALIFAX HX6 3BW | GB |
| AGC CHEMICALS EUROPE, LTD. | World Trade Center, Zuidplein 80 - H Tower | 1077 XV | AMSTERDAM | NL |
| AGC SI-TECH.CO. | 11-1 Kitarimato-Machi Wakamatsu-Ku | 808-0027 | KITAKYUSUYU | JP |
| AGFA GEAERT NV | Septestraat 27 | 2640 | MORTSEL | BE |
| AICURIS GMBH & CO. KG | Friedrich-Ebert-Str. 475 Building 302 | 42117 | WUPPERTAL | DE |
| AJINOMOTO PHARMACEUTICALS CO., LTD. | 1-1 Suzukicho, Kawasakiku, Kawasakishi | 210-8681 | KANAGAWA | JP |
| ALBEMARLE EUROPE | Rue du Bosquet 9 | 1300 | LOUVAIN-LA-NEUVE | BE |
| ALCON LABS | R2-43 6201 South Fwy | 76134 | FORT WORTH, TX | US |
| ALDEVRON FREIBURG GMBH | Waltershofener Strasse 17 | 79111 | FREIBURG | DE |
| ALFA AESAR | Orchard Road | SG8 5HE | ROYSTON HERTFORDSHIRE | GB |
| ALFA LAVAL TUMBA AB | Hans Stahles vag | 14780 | TUMBA | SE |
| ALLERGAN, INC | 2025 Dupont Drive | | IRVINE CA 92612 | US |
| ALLNEX BELGIUM | Square Marie Curie 11 | 1070 | BRUSSELS | BE |
| ALLTECH GROM GMBH | Etwiesenstraße 37 | 72108 | ROTTENBURG-HAILFINGEN | DE |
| ALMAC DISCOVERY LTD | 20 Seagoe Industrial Estate | BT63 5QD | CRAIGAVON | GB |
| ALMIRALL S.A. | Ronda General Mitre 151 | 8022 | BARCELONA | ES |
| ALTEXA DEVELOPMENT | 11, Avenue Princesse Grace | 98000 | MONTE CARLO | MC |
| AMAKEM NV | Bioville Agoralaan A Bis | 3590 | DIEPENBEEK | BE |
| AMGEN INC. | One Amgen Center Drive | | THOUSAND OAKS CA 91320-1799 | US |
| AMPAC FINE CHEMICALS | PO Box 1718, MS 1007 | | RANCHO CORDOVA CA 95741 | US |
| ANALYTICON DISCOVERY GMBH | Hermannswerder Haus 17 | 14473 | POTSDAM | DE |
| ANAMAR AB | Sölveg, 41 | 22370 | LUND | SE |
| ANSELL OCCUPATIONAL HEALTHCARE | Wijngaardveld 34 C | 9300 | AALST | BE |
| ANTABIO | Rue Pierre et Marie Curie | 31670 | LA BERGE | FR |
| APPLESHAW ASSOCIATES | 7 Ryhill Way | | EARLEY RG6 RAZ | GB |
| APTUIT VERONA SRL | Via Fleming N4 | 37135 | VERONA | IT |
| ARMFIELD LTD | Bridge House West Street | | RINGWOOD BH24 1DY | GB |
| ARQULE | 19 Presidential Way | | WOBURN MA 01801-5140 | US |
| ARRAY BIOPHARMA | 3200 Walnut Street | | BOULDER CO 80301 | US |
| ASINEX | 20 Geroev Panfilovtzev, building 1 | 125480 | MOSCOW | RU |
| ASTELLAS PHARMA B.V. | Sylviusweg 62 | 2333 BE | LEIDEN | NL |
| ASTEX PHARMACEUTICALS | 436 Cambridge Science Park Milton Road | C84 OWE | CAMBRIDGE | GB |
| ASTRA ZENECA PLC | 15 Stanhope Gate | W1K 1LN | LONDON W1K 1LN | GB |
| ASUBIO PHARMA | 6-4-3 Minatojima-Minamimachi, Chuo-ku | 650-0047 | KOBE | JP |
| ASYNT | 29 Hall Barn Road Industrial Estate | C87 5RJ | ISLEHAM, ELY | GB |
| ATLANCHIM PHARMA | 3 rue Aromax | | SAINT-HERBLAIN | FR |
| AUREUS SCIENCES | 118-122 avenue de France | 75013 | PARIS | FR |
| AVID RADIOPHARMACEUTICALS | 3711 Market Street 7th Floor | 19104 | PHILADELPHIA | US |
| AXYNTIS | 45 Rue Pomard | 75012 | PARIS | FR |
| BAC BV | JH Oortweg 21 | 2333CH | LEIDEN | NL |
| BACHEM AG | Hauptstrasse 144 | 4416 | BUBENDORF | CH |
| BASF AG | Carl-Bosch-Strasse 38 | 67056 | LUDWIGSHAFEN | DE |
| BASF CROP PROTECTION | N2, 4 | 68161 | MANNHEIM | DE |
| BASILEA PHARMACEUTICA INTERNATIONAL AG | | | | |
| | Grenzacherstr. 487 | 4058 | BASEL | CH |
| BAYER CROPSCIENCE AG | Industriepark Hoechst | 65926 | FRANKFURT AM MAIN | DE |
| BAYER HEALTHCARE | Müllerstr. 178 | 13353 | BERLIN | DE |
| BCI PHARMA | 26 rue debussy | 34980 | SAINT GELY DU FESC | FR |
| BECTON DICKINSON BENELUX N.V. | POB 13 Erembodegem-Dorp 86 | 9320 | EREMBODEGEM | BE |

BENTHAM SCIENCE PUBLISHERS



Executive Suite Y – 2, PO Box 7917, Saif Zone, Sharjah, U.A.E

Contact person: Faizan ul Haq

Faizan@benthamscience.org

Tel: +971-6-5571132 - Fax: +971-6-5571134

www.benthamscience.com

We are a leading STM publisher of 131 high quality journals which helps to answer the information needs of the pharmaceutical, medical & biomedical research community. Some of the high impact titles which enjoy a wide reach and distribution are Current Gene Therapy (Impact Factor 4.906), Current Alzheimer Research (Impact Factor 3.796), Current Medicinal Chemistry (Impact Factor 3.715), and other popular titles.

- FREE online journals and information: www.benthamscience.com
- Subscribe, Consortia, discounted global licenses and trials: marketing@benthamscience.org
- Bentham eBooks: For the highest quality eBooks for academic & corporate researchers & under graduates, visit: <http://ebooks.benthamscience.com/>

| | | | | |
|---|---|----------|-----------------------------|----|
| BERTIN PHARMA | 10 bis avenue ampère | 78180 | MONTIGNY LE BRETONNEUX | FR |
| BIAL - PORTELA & CA | Avenida da Siderurgia Nacional | 4745 457 | S. MAMEDE DO CORONADO | PT |
| BIO PURE TECHNOLOGY LTD | 17 South Street | | HAVANT PO9 1BU | GB |
| BIOALTERNATIVES | 1bis, rue des Plantes | 86160 | GENÇAY | FR |
| BIODELLVIA | 35 rue Jean Fiolle | 13006 | MARSEILLE | FR |
| BIOCREA GMBH | Meissner Strasse 191 | 1445 | RADEBEUL | DE |
| BIODURO | Building E No. 29 Life Science Park Road | 102206 | CHANGPING DISTRICT BEIJING | GB |
| BIOENGINEERING AG | Sagenrainstrasse 7 | 8636 | WALD | CH |
| BIOFOCUS | Chesterford Research Park | CB10 1XL | SAFFRON WALDEN | GB |
| BIOGAIA FERMENTATION AB | PO Box 965 | 22009 | LUND | SE |
| BIOGENEX | 49026 Milmont Drive | | FREMONT, CA 94538 | US |
| BIOIBERICA SA | Plaza Francesc Macia 7 | 8029 | BARCELONA | ES |
| BIOLINE UK INC | 16 The Edge Business Centre Humber Road | | LONDON NW2 6EW | GB |
| BIOPHARMA PROCESS SYSTEMS | Winnall Valley Road Biopharma House | | WINCHESTER SO23 0CD | GB |
| BIOPREDIC INTERNATIONAL | Parc d'Affaires de la Bretteche Bât A4 | 35760 | SAINT GREGOIRE | FR |
| BIOPROJET BIOTECH | 4 rue du Chesnay Beauregard | 35760 | SAINT GRÉGOIRE | FR |
| BIO-RAD LABORATORIES | Fokkerstraat 10 | 3905 KV | VEENENDAAL | NL |
| BIORELIANCE LTD | Innovation Park Hillfoots Road | | STIRLING FK9 4NF | GB |
| BIO SOLVE BV | Rue de Roger Husson 20 | 57260 | DIEUZE | FR |
| BIO SOLVEIT | An der Zegelei 79 | 53757 | ST. AUGUSTIN | DE |
| BIOTAGE AB | Kungsgatan 76 | 75318 | UPPSALA | SE |
| BIOTECHNIQUES | One Research Drive Suite 400A PO BOX 1070 | | WESTBOROUGH, MA 01581-1070 | US |
| BIOTEST AG | Landsteinerstrasse 5 | 63303 | DREIEICH | DE |
| BISCHOFF ANALYSENTECHNIK GMBH | Boebingerstrasse 23 | 71229 | LEONBERG | DE |
| BOEHRINGER INGELHEIM PHARMA GMBH & CO. KG | Birkendorfer Str. 65 | 88400 | BIBERACH | DE |
| BOROCHEM PBO | 10, rue du Prof. Zarifian | 14200 | HERONVILLE SAINT CLAIR | FR |
| BRISTOL MYERS SQUIBB | 345 Park Avenue | 10154 | NEW YORK | US |
| BRUKER DALTONIK GMBH | Fahrenheitstrasse 4 | 28359 | BREMEN | DE |
| CALEVA PROCESS SOLUTIONS LTD | Butts Pond Industrial Estate | | STURMINSTER NEWTON DT10 1AZ | GB |
| CAMAG | Sonnenmattstrasse 11 | 4132 | MUTTENZ | CH |
| CAMBRIDGE CRYSTALLOGRAPHIC DATA CENTRE (CCDC) | 12 Union Road | CB2 1EZ | CAMBRIDGE | GB |
| CAMBRIDGE MAJOR LABORATORIES | Vliesvenweg 1 | 6002NM | WEERT | NL |
| CAMBRIDGESOFT CORPORATION | 100 Cambridge Park Drive | 2140 | CAMBRIDGE MA | US |
| CAPROTEC BIOANALYTICS GMBH | Volmerstrasse 5 | 12489 | BERLIN | DE |
| CARBODEN AMCIS AG | Hauptstrasse 171 | 4416 | BUBENDORF | CH |
| CARBOSYNTH LIMITED | 8&9 Old Station Business Park, Compton | RG20 6NE | BERKSHIRE | GB |
| CARL ZEISS | Ikaroslaan 9 | 1930 | ZAVENTEM | BE |
| CAYMAN PHARMA S.R.O. | ul. Práce 657 | 27711 | NERATOVICE | CZ |
| CELERA GENOMICS | 45 West Gude Drive | | ROCKVILLE, MD 20850 | US |
| CELGENE AVILOMICS RESEARCH | 45 Wiggins Ave | MA 01730 | BEDFORD | US |
| CELLZOME GMBH | Meyerhofstrasse 1 | 69117 | HEIDELBERG | DE |
| CEM µ WAVES | Immeuble Ariane 4 rue René Raze | 91400 | SACLAY | FR |
| CENTRE DE RECHERCHE ET DÉVELOPPEMENT PIERRE FABRE | 3 avenue Hubert Curien BP13562 | 31035 | TOULOUSE | FR |
| CEREP | Le Bois l'Évêque BP 30011 | 86600 | CELLE L'ÉVESCAULT | FR |
| CERTARA | Martin Kollar Strasse 17 | 81829 | MUNCHEN | DE |
| CFM OSKAR TROPITZSCH | Waldershofer Str. 49-51 | 95615 | MARKTREDWITZ | DE |
| CHARNWOOD MOLECULAR LTD | 7, Beaumont Court Prince William Road | LE114WB | LOUGHBOROUGH | GB |
| CHELATEC - SAS | 1 rue Annax | 44821 | SAINT-HERBLAIN CEDEX | FR |
| CHEMAXON LTD | Zahony utca 7 | 1031 | BUDAPEST | HU |
| CHEMBRIDGE CORPORATION | next page | | | |
| CHEMDIV, INC. | 6605 Nancy Ridge Drive | CA 92121 | SAN DIEGO | US |
| CHEMI S.P.A. | Via dei Lavoratori 54 | 20092 | CINISELLO BALSAMO MI | IT |
| CHEMICAL ABSTRACT SERVICE (CAS) | 2540 Olentangy River Road | | OHIO COLUMBUS 43210-0012 | US |
| CHEMICAL COMPUTING GROUP INC | Sherbrooke Street West 1010, Suite 910 | | MONTREAL QUEBEC H3A 2R7 | CA |
| CHEMISCHE FABRIK BERG GMBH | Mainthalstrasse 3 | 6749 | BITTERFELD | DE |
| CHEMOCOPEIA PTY LTD | 157 Arnold Street | 3064 | PRINCES HILL, VIC | AU |
| CHEMOSYNTHA NV | Gentstraat 58 | 8760 | MEULEBEKE | BE |
| CHIESI FARMACEUTICI S.P.A. | via Palermo 26/A | 43122 | PARMA | IT |
| CHILWORTH TECHNOLOGY LTD | Beta House Chilworth Science Park | | SOUTHAMPTON SO16 7NS | GB |
| CHIRAL TECHNOLOGIES EUROPE | Bd Conthier d'Andermah Parc d'Innovation | 67400 | ILKIRCH | FR |

CHEMBRIDGE CORPORATION



11 199 Sorrento Valley Rd., Suite 206 San Diego, CA 92121
 UNITED STATES
sales@chembridge.com
 Tel: +1-858-451-7400 - Fax: +1-858-451-7401
www.chembridge.com

ChemBridge Corporation is a global provider of enabling chemistry products and contract research services for small molecule drug discovery. ChemBridge's extensive portfolio includes over 1,000,000 diverse and target-focused screening compounds, 15,000 chemical building blocks, our Hit2Lead.com on-line chemical store and high-end, research-intensive, custom library & synthetic/medicinal chemistry services. ChemBridge's research products and services are supported by an experienced, dedicated and friendly customer service and project management team at our San Diego headquarters and by our impeccable, 20-year track record of innovation, quality and deliverability.

| | | | | |
|-------------------------------|--|----------|---------------------------|----|
| CHROMACOL LTD | 3 Mundells Industrial Centre | | HERTS AL7 1EW | GB |
| CHUGAI PHARMA EUROPE LTD. | Mulliner House, Turnham Green | W4 1NN | LONDON | GB |
| CILAG AG | Stimmerstrasse 104 | 8200 | SCHAFFHAUSEN | CH |
| CISBIO BIOASSAYS | Parc Marcel Boiteux BP 84175 | 30200 | CODOLET | FR |
| CLL PHARMA | 455 Promenade des Anglais | 6299 | NICE CEDEX 3 | FR |
| CML-EUROPE B.V. | Vliesvenweg 1 | 6002NM | WEERT | NL |
| COBRA/SYNORG | IRCOF 1 rue Tesnière | 76821 | MONT SAINT AIGNAN CEDEX | FR |
| COLORCON LTD | Flagship House Victory Way Crossways | | DARTFORD KENT DA2 6QD | GB |
| CONFARMA AG | Emil Frey Strasse 39 | 4142 | MUNCHENSTEINBASLE | CH |
| CONNECTED DISCOVERY | 27 Old Gloucester Street | WC1N 3AX | LONDON | GB |
| CONSTELLATION PHARMACEUTICALS | 215 First Street, Suite 200 | MA 02142 | CAMBRIDGE | GB |
| CONVERGENCE PHARMACEUTICALS | Maia Building Babraham Research Campus | CB22 3AT | CAMBRIDGE | GB |
| COPELY SCIENTIFIC LTD | Private Road 7 Colwick Industrial Estate | | NOTTINGHAM NG4 2ER | GB |
| COVANCE LABORATORIES LTD | Otley Road | | HARROGATE N YORKS HG3 1PY | GB |

CRESSET



New Cambridge House, Bassingbourn Road, Litlington,
 Cambridgeshire, SG8 0SS, UK
enquiries@cresset-group.com
 Tel: +44 (0)1223 858890 - Fax: +44 (0)1223 853667
www.cresset-group.com

Chemists from the world's leading research organizations use Cresset's software on a daily basis to:

- visualise electrostatics to make better chemistry decisions
- analyse SAR data to find activity and selectivity cliffs
- perform scaffold hopping to find new IP
- run virtual screening from their desktop.

| | | | | |
|---|---|----------|--------------------------|----|
| CRUCELL | Archimedesweg 4-6 | 2333CN | LEIDEN | NL |
| CRYSTALLICS | Meibergdreef 31 | 1105 AZ | AMSTERDAM | NL |
| CYBIO AG | Goeschwitzer Strasse 40 | 7745 | JENA | DE |
| CYCLOFLUIDIC LTD | BioPark, Broadwater Road | AL7 3AX | WELWYN GARDEN CITY HERTS | GB |
| D. D. P. CORPORATION | 1097-3, Kashija, Kannami-cho | 419-0112 | TAGATA-GUN SHIZUOKA | JP |
| DAIICHI SANKYO CO., LTD. | 1-2-58 Hiromachi Shinagawa-ku | 140-8710 | TOKYO | JP |
| DAINIPPON SUMITOMO PHARMA CO., LTD. | 3-1-98 kasugade-naka Konohana-ku | 554-0022 | OSAKA | JP |
| DAISO FINE CHEM | Immermannstr. 13 | 40210 | DUSSELDORF | DE |
| DIAXONHIT | 65, boulevard Masséna | 75013 | PARIS | FR |
| DIVERCHIM | ZAC du Moulin 6 Rue du Noyer | 95700 | ROISSY EN FRANCE | FR |
| DOMAIN THERAPEUTICS | Bioparc Bd Sébastien Brant | 67400 | STRASBOURG - ILLKIRCH | FR |
| DOMAINEX LIMITED | 162, Cambridge Science Park Milton Road | CB40GH | CAMBRIDGE | GB |
| DOMPÉ PHARMA | Via Campo di Pile | 67100 | L'AQUILA | IT |
| DOTMATIC LTD | The Old Monastery Windhill | CM23 2ND | BISHOPS STORTFORD | GB |
| DR. REDDY'S LABORATORIES | 410 Cambridge Science Park | CB4 0PE | CAMBRIDGE | GB |
| DRUGDESIGNTECH SA | Chemin des Aulx, 14 | 1228 | PLAN LES Ouates | CH |
| DRUGS FOR NEGLECTED DISEASES INITIATIVE | 15 Chemin Louis-Dunant | 1202 | GENEVA | CH |

| | | | | |
|---------------------------|-------------------------------------|----------|--------------|----|
| DSM RESEARCH | PO BOX 18 | 6160 MD | GELEEN | NL |
| DYNAMIC EXTRACTIONS LTD. | 890, Plymouth Road | SL1 4LP | SLOUGH | GB |
| EBURON | Genestraat 58 | 8760 | MEULEBEKE | BE |
| ECOLEC | Genestraat 58 | 8760 | MEULEBEKE | BE |
| ECOSYNTH | Stationsstraat 123 | 8400 | OOSTENDE | BE |
| ECRINS THERAPEUTICS | 5 Avenue du Grand Sablon | 38700 | LA TRONCHE | FR |
| EDASACIENTIFIC | Rue du Parc 3 | 1207 | GENEVA | CH |
| EDELRIIS | 115 Av. Lacassagne | 69003 | LYON | FR |
| EGIS PHARMACEUTICALS PLC. | Kereszturi u. 30-38 | 1106 | BUDAPEST | HU |
| EISAI CO., LTD. | Tokodai 5-1-3, Tsukuba-shi, Ibaraki | 300-2635 | TSUKUBA | JP |
| ELI LILLY & COMPANY | Lilly Corporate Center | IN 46285 | INDIANAPOLIS | US |

ELSEVIER



ELSEVIER

Radarweg 29, 1043 NX Amsterdam, The Netherlands

Contact name: Diddel Francissen, Publisher

d.francissen@elsevier.com

Tel: +31 20 485 3911, Fax: +31 20 485 2845

www.elsevier.com/chemistry

Elsevier, Publishers of leading international Medicinal Chemistry research including the 2nd and 3rd highest cited journals in Medicinal Chemistry (Bioorganic & Medicinal Chemistry Letters and Bioorganic & Medicinal Chemistry).

| | | | | |
|---|---|----------|----------------------------------|----|
| ENAMINE LTD | Matosova 23 | 1103 | KYIV | UA |
| ENI S.P.A. | Via Valsesia 30 | 28100 | NOVARA | IT |
| ENTOMOPHARM | Lundekaersvej 33 | 5250 | ODENSE SV | DK |
| ESTEVE | Avda Mare de Deu de Montserrat, 221 | 8041 | BARCELONA | ES |
| EUROGENTEC | Rue du Bois Saint-Jean 5 | 4102 | OUGRÉE | BE |
| EUROSCREEN | 47, Rue Adrienne Bolland | 6041 | GOSSÉLIES | BE |
| EVOLVUS GROUP | 88 Shukrawar Peth | 411 002 | PUNE | IN |
| EVONIK INDUSTRIES | Paul-Baumann-Straße 1 | 45772 | MARL | DE |
| EVOTEC | 114 Milton Park Abingdon | OX14 4SA | OXFORDSHIRE | GB |
| EXXONMOBIL CHEMICAL | Hermeslaan 2 | 1831 | MACHELEN | BE |
| F HOFFMANN-LA ROCHE | Grenzacherstrasse 124 | 4070 | BASEL | CH |
| F.I.S. FABBRICA ITALIANA SINTETICI S.P.A. | Viale Milano, 26 | 36075 | ALTE DI MONTECCHIO MAGGIORE - VI | IT |
| FAES FARMA, S.A. | Av. Autonomía 10 | 48940 | LEIOA | ES |
| FEF CHEMICALS AIS | Kobenhavnsvej 216 | 4600 | KOGE | DK |
| FIDELTA | Prilaz baruna Filipovica 29 | HR-10000 | ZAGREB | HR |
| FIRMENICH | Route des Jeunes 1 PO Box 239 | 1211 | GENEVA | CH |
| FIZ CHEMIE BERLIN GMBH | Franklinstrasse 11 | 10587 | BERLIN | DE |
| FLAMEL TECHNOLOGIES | 33 av. du Dr Georges Lévy | 69693 | VÉNISSIEUX | FR |
| FLUIDIGM | 1 avenue de l'Atlantique | 91140 | LES ULIS | FR |
| FRESENIUS KABI DEUTSCHLAND GMBH | Else-Kröner-Straße 1 | 61352 | BAD HOMBURG | DE |
| FRONTIER SCIENTIFIC EUROPE | Carmforth | LA61DE | LANCASHIRE | GB |
| FUJI SILYSIA CHEMICAL | En Budron E9 | 1052 | LE MONT-SUR-LAUSANNE | DE |
| GALAPAGOS NV | Generaal de Wittelaan L11 A3 | 2800 | MECHELEN | BE |
| GALCHIMIA | Cebreiro, s/n | 15823 | O PINO A CORUÑA | ES |
| GALDERMA R&D | Les Templiers 2400 route des Colles BP87 | 6902 | SOPHIA-ANTIPOLIS | FR |
| GDCH-GESELLSCHAFT DEUTSCHER CHEMIKER | Postfach 90 04 40 | 60444 | FRANKFURT AM MAIN | DE |
| GE HEALTHCARE BIO-SCIENCES | Rapskatan 23 | 75184 | UPPSALA | SE |
| GENENTECH | 1 DNA Way | CA 94080 | SOUTH SAN FRANCISCO | US |
| GENEVAC LTD | The Sovereign Centre Farthing Road Sproughton | IP1 5AP | IPSWICH SUFFOLK | GB |
| GENFIT SA | 885 Avenue Eugène Avinée | 59120 | LOOS | FR |
| GENZYME PHARMACEUTICALS | Sygena Facility Eichenweg 1 | 4410 | LIESTAL | CH |
| GEVEKE PROCESS TECHNOLOGIES N.V. | Leuvensesteenweg 248 A | 1800 | VILVOORDE | BE |
| GILEAD CONNECTICUT, INC. | 36 East Industrial Road | 6405 | BRANFORD | US |
| GILSON INTERNATIONAL BV | Laan van 's-Gravenmade 80 PO box 3200 | 2495 AJ | AJ DEN HAAG | NL |
| GLAXO WELLCOME UK LTD | Stockley Park West, Uxbridge | UB11 1BT | MIDDLESEX | GB |
| GRAFFINITY PHARMACEUTICALS | Im Neuenheimer Feld 518 | 69120 | HEIDELBERG | DE |

GL CHEMTEC INTERNATIONAL



1456 Wallace road, Oakville, ON, Canada, L6L2Y2

Contact person: Dr Lisa Studnicki

lisa.studnicki@glchemtec.ca

Tel: (905) 469-1940 - Fax: (905) 469-4163

www.glchemtec.ca

GL Chemtec provides custom synthesis and contract research expertise at the drug discovery phase, offering compounds from the milligram to the multi-kilogram range. ISO 9001:2008 Certified

GRACE DISCOVERY SCIENCES

Talent | Technology | Trust™

Unit 6 Boundary Way, Kellet Road Industrial Estate,
Carnforth, Lancashire, LA5 9XP
UNITED KINGDOM

Contact person: David Crowshaw

discoverysciences.uk@grace.com

Tel: +44 (0)1524 734451 - Fax: +44 (0)1524 733599

www.discoverysciences.com

Grace Discovery Sciences are the premier global manufacturer of media for Flash, HPLC, Process chromatography, and more. We help medicinal chemists in all stages of research optimize their time and improve their results with our award winning Reveleris Flash™ Chromatography systems with advanced detection capabilities, our high quality HPLC, UHPLC and Prep LC columns and our full range of supporting accessories, standards, and other equipment.

| | | | | |
|------------------------|-------------------|---------|--------------------------|----|
| GREENPHARMA S.A | 3 Allée du Titane | 45100 | ORLEANS | FR |
| GRIFFIN DISCOVERIES BV | De Boelelaan 1083 | 1081 HV | AMSTERDAM | NL |
| GRUENENTHAL GMBH | Zieglerstr. 6 | 52078 | AACHEN | DE |
| GUERBET | BP 50400 | 95943 | ROISSY CHARLES DE GAULLE | FR |

GVK BIOSCIENCES PVT. LTD.

Accelerating Research

28 A, IDA Nacharam, Hyderabad- 500076, INDIA

Contact person: Srinivas Reddy Mamidi

srinivasreddy.mamidi@gvkbio.com

Tel: +31 642 472 755 / +91 40 6692 9999 - Fax: +91 40 6692 9900

www.gvkbio.com

GVK Biosciences (GVK BIO) is one of Asia's leading Discovery Research and Development organizations providing a broad spectrum of services, across the R&D and manufacturing value chain with a focus on speed and quality. With over a decade of rich experience and portfolio of over 350 customers, we work with pharmaceutical and biotechnology organizations in early-stage collaborations, bringing drug candidates from hit generation through IND filing, while also providing standalone Synthetic chemistry, in vitro screening (MTS/HTS), ADME/PK, Medicinal Chemistry (H2L) and Parallel Medicinal Chemistry (PMC).

| | | | | |
|----------------------------|---|---------|------------------------------|----|
| H. LUNDBECK A/S | Ottiliavej 9 | 2500 | VALBY | DK |
| HAMAMATSU PHOTONICS FRANCE | 19 rue du Saule Trapu | 91300 | MASSY CEDEX | FR |
| HANBON SCI & TECH CO. | No.1-9, Jixian Road | 223005 | HUAI'AN CITY | CN |
| HARMONIC PHARMA | 615 rue du Jardin Botanique | 54600 | VILLERS LÈS NANCY | FR |
| HELSINN HEALTHCARE SA | Via Pian Scariolo 9 | 6912 | PAZZALLO-LUGANO | CH |
| HEPTARES | BioPark Broadwater Road Welwyn Garden City | AL7 1TW | HERTFORDSHIRE | GB |
| HERAEUS GMBH | Heraeustr. 12-14 | 63450 | HANAU | DE |
| HERWLETT PACKARD | 3000 Hanover Street | | PALO ALTO CA 94304-1185 | US |
| HITACHI INSTRUMENTS INC | 7 Ivanhoe Road Hogwood Ind Estate Finchampstead | | WOKINGHAM BERKSHIRE RG40 4QQ | GB |
| HITGEN LTD | 398 Woodstock Rd Wolvercote | OX2 8JW | OXFORD | GB |
| HPC PHARMA | ENSCR, Avenue Général Leclerc CS50837 | 35708 | RENNES | FR |

| | | | | |
|--|--|----------|---------------------|----|
| HYBRIGENICS SERVICES SAS | 3-5 Impasse Reille | 75014 | PARIS | GB |
| HYPHA DISCOVERY LTD | Russell Building, Brunel Science Park, Kingston Lane | UB8 3PQ | UXBRIDGE | GB |
| ID BUSINESS SOLUTIONS LTD | 2 Occam Court Surrey Research Park Guildford | GU2 7QB | SURREY | GB |
| IDENIX PHARMACEUTICALS | 1682 rue de la Valsière Cap Gamma | 34189 | MONTPELLIER CEDEX 4 | FR |
| IMMUNOGEN | 830 Winter St. | MA 02451 | WALTHAM | US |
| INDENA SPA | Via Don Minzoni 6 | 20090 | SETTALA | IT |
| INHIBOX, LTD | Oxford Centre for Innovation, Suites F14-F16 | OX1 1BY | OXFORD | GB |
| INNOTHERA | 22, avenue Aristide Briand | 94111 | ARCUEIL CEDEX | FR |
| INNOVORGA | Moulin de la Houssie Bat18 BP 1039 | 51687 | REIMS | FR |
| INSTITUT DE RECHERCHE PIERRE FABRE | 17 av Jean Moulin | 81106 | CASTRES | FR |
| INSTITUT DE RECHERCHES SERVIER | 125, Chemin de Ronde | 78290 | CROISSY SUR SEINE | FR |
| INSTITUTE FOR RESEARCH IN BIOMEDICINE (IRB) C/ Baldiri Reixac 10 | | 8028 | BARCELONA | ES |
| INSTRACTION GMBH | Donnersbergweg 1 | 67059 | LUDWIGSHAFEN | DE |
| INTE.LIGAND SOFTWARE DEVELOPMENT & CONSULTING | | | | |
| | C. M. Hofbauer-Gasse 6 | 2344 | MARIA ENZERSDORF | DE |
| INTEGREX RESEARCH | PO Box 2207 | 9704 CE | GRONINGEN | NL |
| INTERBIOSCREEN LTD | PO BOX 218 | 121019 | MOSCOW | RU |
| INTERCHIM | 211bis Av. JF Kennedy | 3100 | MONTLUÇON CEDEX | FR |
| INVENTIVA | 50 rue de Dijon | 21121 | DAIX | FR |
| IPSEN INNOVATION | 5, avenue du Canada | 91940 | LES ULIS | FR |
| IQM-CSIC | Juan de la Cierva 3 | 28006 | MADRID | ES |
| IRIS BIOTECH GMBH | Waldershofer Str. 49-51 | 95615 | MARKTREDWITZ | DE |
| IRONWOOD PHARMACEUTICALS, INC. | 7 Gardner St | 2458 | NEWTON | US |
| ITALFARMACO SPA | Via dei Lavoratori 54 | 20092 | CINISELLO BALSAMO | IT |
| ITEOS THERAPEUTICS | Rue Auguste Piccard 48 | 6041 | GOSELIES | BE |

JANSSEN RESEARCH & DEVELOPMENT A Division of Janssen Pharmaceutica NV



Turnhouseweg 30, 2340 Beerse
BELGIUM

contact person: Frederik Wittock, Senior Director, R&D Communication

fwittock@its.jnj.com

Tel: +32 (0) 14 60 57 24

www.jnjpharmarnd.com

At Janssen Research & Development, one of the Janssen Pharmaceutical Companies we are united and energized by one mission – to discover and develop innovative medicines that ease patients' suffering, and solve the most important unmet medical needs of our time. We think of the world as our laboratory and we look for innovation wherever it exists. This drives our relentless search for the best science, and our pursuit of collaborations and partnerships.

| | | | | |
|------------------------------|--|----------|-----------------------------|----|
| JAPAN TABACCO INC. | 1-1, Murasaki-cho Takatsuki | 569-1125 | OSAKA | JP |
| JAVENECH | ZI Aumallerie | 35133 | JAVENE | FR |
| JENWAY LTD | Gransmore Green Felsted | | DUNMOW CM6 3LB | GB |
| JEOL (EUROPE) | Espace Claude Monnet 1 Allée de Giverny | 78290 | CROISSY SUR SEINE | FR |
| JOHN WILEY & SONS LTD | The Atrium, Southern Gate | PO19 8SQ | CHICHESTER, WEST SUSSEX | GB |
| JP SELECTA SA | Carretera Nacional II Km 5851 Abrera | 8630 | BARCELONA | ES |
| JUBILANT BIOSYS | 96 Industrial Suburb, 2nd stage Yeswantpur | 560022 | BANGALORE | IN |
| KAIRONKEM | 20 rue Marc Donadille | 13013 | MARSEILLE | FR |
| KAISER OPTICAL | 5 Allée du moulin Berger | 69130 | ECULLY | FR |
| KARO BIO AB | Novum | 141 57 | HUDDINGE | SE |
| KEY ORGANICS LTD | Highfield Industrial Estate | PL32 9QZ | CAMELFORD CORNWALL PL32 9QZ | GB |
| KIRALYA | Parc Biotech 102 av Gaston Roussel | 93230 | ROMAINVILLE | FR |
| KISHIDA CHEMICAL CO.,LTD. | 3-1, Honmachibashi Chuo-ku | 540-0029 | OSAKA | JP |
| KROMATON | 45 Avenue Rhin Danube | 7100 | ANNONAY | FR |
| KYOWA HAKKO KIRIN CO., LTD. | 1188 Shimotogari Nagazumi-cho Sunto-gun | 4118731 | SHIZUOKA | JP |
| KYRAPHARM | Rue du Moulin de la Canne | 45300 | PITHIVIERS | FR |
| LABIANA LIFE SCIENCES SA | C/Venus 26 Can Parellada Industrial Terrassa | 8228 | BARCELONA | ES |
| LABOMATIC INSTRUMENTS AG | Ringstrasse 13 | 4123 | ALLSCHWIL | CH |
| LABORATOIRES PIERRE FABRE SA | Le Carla Burlats | 81106 | CASTRES CEDEX | FR |
| LABVANTAGE | Instron House Coronation Road | | BUCKS HIGH WYCOMBE HP12 3SY | GB |
| LABWARE LTD | Old School House Knutsford Road | | HOLMES CHAPEL CW4 7DE | GB |
| LEAD DISCOVERY CENTER GMBH | Otto-Hahn-Str. 15 | 44227 | DORTMUND | DE |

| | | | | |
|--------------------------------|--|------------|-----------------------|----|
| LEAD MOLECULAR DESIGN, S.L. | Valles, 96-102 Local 27 | 8173 | SANT CUGAT DEL VALLES | ES |
| LEAD PHARMA | Trigon Building, Route 223 Kapittelweg 29 | 6525FN | NIJMEGEN | NL |
| LEADSCOPE INC | 1393 Dublin Road | 43215 | COLUMBUS, OH | US |
| LEICA MICROSYSTEMS HOLDINGS AG | Ernst-Leitz-Strasse | 35578 | WETZLAR | DE |
| LEO PHARMA/AS | Industriparken 55 | 2750 | BALLERUP | DK |
| LEWA GMBH | Ulmer Strasse 10 | 71229 | LEONBERG | DE |
| LIFE CHEMICALS | 5 Mumsanska Street | 2660 | KYIV | UA |
| LIGAND PHARMACEUTICALS | 11119 North Torrey Pines Road, Suite 200 | CA 92037 | LA JOLLA | US |
| LIVCHEM LOGISTICS GMBH | Stroofstrasse 27 Building 2901 | 65933 | FRANKFURT | DE |
| LOCUM INTERNATIONAL GROUP | 50 Gilad Avenue Industrial Center PO BOX 874 | | KOCHAV YAIR 44864 | IL |
| LONGAAG | Rottenstrasse 6 | 3904 | VISP | CH |
| LONGA BRAINE SA | Chaussée de Tubize 297 | 1420 | BRAINE L'ALLEUD | BE |
| L'OREAL | 1 av Eugène Schueller | 93600 | AULNAY SOUS BOIS | FR |
| LUXILON | Vosveld 11 | 2110 | WIJNEGEM | BE |
| MACROCHEM | Alexandra Matrosova str., 23 | 1103 | KIEV | UA |
| MACTAC EUROPE S.A. | Bd Kennedy Zoning Industriel, zone B | 7060 | SOIGNIES | BE |
| MALVERN INSTRUMENTS LTD | Groewood Road | | MALVERN WR14 1XZ | GB |
| MDS NORDION | 447 March Road | ON K2K 1X8 | OTTAWA | CA |
| MEDICINES FOR MALARIA VENTURE | Route de Pré-Bois 20 | 1215 | GENEVA | CH |
| MEDIMMUNE | One MedImmune Way | MD 20878 | GAITHERSBURG | US |
| MEDIT | 2 rue du Belvédère | 91120 | PALaiseAU | FR |
| MEDIVIRAB | Lunastigen 7 | 141 22 | HUDDINGE | SE |
| MENARINI RICERCE SPA | Via Sette Santi 3 | 50131 | FIRENZE | IT |

MERCACHEM B.V.

Kerkenbos 1013, 6546 BB Nijmegen
THE NETHERLANDS

MERCACHEM

Contact person: Jan Schultz
jan.schultz@mercachem.com
Tel: +31-243723300 - Fax: +31-243723305
www.mercachem.com

Mercachem is a leading European CRO for Discovery Chemistry, Medicinal Chemistry, Parallel Chemistry, Process Research and GMP Production. Our modern, state-of-the-art laboratory facilities are located in Nijmegen, the Netherlands and Prague, the Czech Republic. Founded in 1997, Mercachem employs 150 people, more than 40% of whom hold post-graduate degrees in chemistry.

| | | | | |
|---|--|---------------|---------------------|----|
| MERCK & CO INC. | One Merck Drive P.O. Box 100 | NJ 08889-0100 | WHITEHOUSE STATION | US |
| MERCK KGAA | Frankfurterstrasse, 250 | 64271 | DARMSTADT | DE |
| MERZ PHARMACEUTICALS GMBH | Eckenheimer Landstrasse 100 | 60318 | FRANKFURT | DE |
| MILESTONE INC. | 20 Mountain Rd | | N. GRANBY, CT 06060 | US |
| MILLENNIUM PHARMACEUTICALS TAKEDA COMPANY | 40 Landsdowne 2nd floor | MA 02139 | CAMBRIDGE | US |
| MIP TECHNOLOGIES AB | Scheevägen 22 | 22363 | LUND | SE |
| MITOLOGICS | 102, Av Gaston Roussel | 93230 | ROMAINVILLE | FR |
| MITSUBISHI CHEMICAL CORPORATION | 1-1 Marunouchi, 1-chome, Chiyoda-ku | 100 8251 | TOKYO | JP |
| MITSUBISHI TANABE PHARMA CORPORATION | 1000, Kamoshida-cho, Aoba-ku, Yokohama-shi | 227-0033 | KANAGAWA | JP |

MOLECULES – OPEN ACCESS JOURNAL



molecules

Basel, SWITZERLAND
molecules.mdpi.com
Tel: +41 61 683 77 34
www.mdpi.com/journal/molecules/

Molecules (ISSN 1420-3049; CODEN: MOLEFW) is the leading international, peer-reviewed open access journal of synthetic organic chemistry and natural product chemistry. Molecules is published monthly online by MDPI. The Impact Factor for Molecules is 2.095 (2013 Journal Citation Reports® Science Edition, Thomson Reuters, 2014)

| | | | | |
|---|---|----------|---------------------|----|
| MOLECULAR DEVICES LTD | 135 Wharfedale Road Wincersh Triangle | | WOKINGHAM RG41 5RB | GB |
| MORPHOSYS AG | Lena Christ Strasse 48 | 82152 | MARTINSRIED MUNICH | DE |
| MORPHOTEK, INC. | 210 Welsh Pool Road | PA 19341 | EXTON | US |
| MSD ANIMAL HEALTH INNOVATION GMBH | Zur Propstei | 55270 | SCHWABENHEIM | DE |
| MULTISPAN INC. | 26219 Eden Landing Road | CA 94545 | HAYWARD | US |
| NAEJA PHARMACEUTICAL INC. | 4290-91 A Street | T6E 5V2 | EDMONTON ALBERTA | CA |
| NERVIANO MEDICAL SCIENCES | Viale Pasteur 10 | 20014 | NERVIANO | IT |
| NETRIS PHARMA | Centre Léon Bérard 28 rue Laennec | 69008 | LYON | FR |
| NEUROFIT SAS | Boulevard Sébastien Brant | 67400 | ILLKIRCH | FR |
| NEUTROTUNE AG | Via della posta, 10 | 6934 | BIOGGIO | CH |
| NEW ENGLAND DISCOVERY PARTNERS | 23 Business Park Drive | 6405 | BRANFORD | US |
| NEXTMOVE SOFTWARE LIMITED | Cambridge Science Park Milton Road | CB4 0EY | CAMBRIDGE | GB |
| NIKKISO CO., LTD. | 4-20-3, Ebisu, Shibuya-ku | 150-6022 | TOKYO | JP |
| NIPPON CHEMIPHAR CO., LTD. | 1-22 Hikokawado | 341-0005 | MISATO | JP |
| NORGINE LTD | Norgine House Widewater Place Moorhall Rd | UB9 6NS | UXBRIDGE, MIDDLESEX | GB |
| NOVALIX | boulevard Sébastien Brant Bioparc | 67400 | ILLKIRCH | FR |
| NOVARTIS INSTITUTE FOR TROPICAL DISEASES | | | | |
| | 10 Biopolis Road #05-01 Chromos Building | 138670 | SINGAPORE | SG |
| NOVARTIS INSTITUTES FOR BIOMEDICAL RESEARCH | | | | |
| | Wimblehurst Road | RH12 5AB | HORSHAM | GB |
| NOVASEP GROUP | 82, Boulevard de la Moselle | 54340 | POMPEY | FR |
| NOVO NORDISK | Novo Nordisk Park | 2760 | MAALOEV | DK |
| NT-MDT | High Tech Campus 83 | 5656 | AG EINDHOVEN | NL |
| NUEVOLUTION A/S | Rønnegade 8 | 2100 | COPENHAGEN | DK |
| OMEGA CAT SYSTEM | Avenue du Général Leclerc | 35708 | RENNES | FR |
| OMEGA PHARMA NV | IJ De Pijpels Vencoweg, 26 | 9810 | NAZARETH | BE |
| OMEGACHEM | 480, Rue Perreault St-Romuald | G6W 7V6 | QUÉBEC | CA |
| ONO PHARMACEUTICAL CO.LTD. | 3-1-1 Sakurai Shimamoto-cho Mishima-gun | 618-8585 | OSAKA | JP |

ONTARGET CHEMISTRY



OnTarget Chemistry

Virdings allé 32 b, SE-754 50 Uppsala, SWEDEN

contact person: Mr Fredrik Lehmann

info@ontargetchemistry.com

Tel: +46 766 148739

www.ontargetchemistry.com

OnTarget Chemistry is a pre-clinical contract research organization (CRO) that offers premium quality synthetic and analytical chemistry services performed by a professional and experienced team of chemists with pharma backgrounds.

| | | | | |
|-------------------------------|---|----------|---------------------|----|
| ONYX SCIENTIFIC LTD | Units 97/98 Silverbriar Sunderland Enterprise Park East | | SUNDERLAND SR5 2TQ | GB |
| OPENEYE SCIENTIFIC SOFTWARE | 9, Bisbee Court | CA 87508 | SANTA FE | US |
| OPTIBRIUM LTD | 7221 Cambridge Research Park Beach Drive | CB25 9TL | CAMBRIDGE | GB |
| ORIBASE PHARMA | 1682 rue de la valseière | 34000 | MONTPELLIER | FR |
| ORIL INDUSTRIE | 13 rue Auguste Desgenetais | 76210 | BOLBEC | FR |
| ORION CORP. | Tengströmmikatu 8 | 20360 | TURKU | FI |
| OROXCELL | Parc Biocitech 102 Av Gaston Roussel | 93230 | ROMAINVILLE | FR |
| OTSUKA PHARMACEUTICAL CO.,LTD | 463-10 Kagasuno Kawauchi-cho | 771-0192 | TOKUSHIMA | JP |
| OXELTIS | Cap Gamma, 1682 rue de la valseière CS27384 | 34189 | MONTPELLIER CEDEX 4 | FR |
| OXFORD INSTRUMENTS | Tubney Woods | | ABINGDON OX13 5QX | GB |
| PARAZA PHARMA INC. | 7171 Frederick-Banting | H4S1Z9 | MONTREAL | CA |
| PEAK BIOTECH A/S | Hejreskovvej 22C | 3490 | KVISTGAARD | DK |
| PEAKDALE MOLECULAR LTD | Peakedale Science Park Sheffield Road, Chapel-en-le-Frith | SK230PG | HIGH PEAK | GB |
| PEPSCAN THERAPEUTICS | Zuidersluisweg 2 | 8212 DT | LELYSTAD | NL |
| PEPTISYNTHA | Ransbeekstraat 310 | 1120 | BRUSSELS | BE |
| PERKINELMER | 16 Avenue du Québec Bât Lys | 91140 | VILLEBON SUR YVETTE | FR |
| PF&F LTD | Atherton | | MANCHESTER M46 0LY | GB |
| PFIZER | 35 Cambridge Park Dr | MA 02140 | CAMBRIDGE | GB |
| PFIZER NEUSENTIS | The Portway Building Granta Park Great Abington | CB21 6ES | CAMBRIDGE | GB |

| | | | | |
|---|---|----------|----------------------------|----|
| PHENOMENEX LTD. | Zeppelinstr. 5 | 63741 | ASCHAFFENBURG | DE |
| PHILIP HARRIS SCIENTIFIC | Novara House Excelsior Road Ashby Park | | ASHEY DE LA ZOUCH LE65 1NG | GB |
| PIC SOLUTION | Agroparc 200 rue Michel de Montaigne | 84911 | AVIGNON CEDEX 9 | FR |
| PIRAMAL DISCOVERY SOLUTIONS | 4 rue du bois de Boulogne | 92210 | SAINT-CLOUD | FR |
| POLYMER STANDARDS SERVICE | In der Dalheimer Wiese 5 | D-55120 | MAINZ | DE |
| POLYPEPTIDE LABORATORIES FRANCE SAS | 7 rue de Boulogne | 67100 | STRASBOURG | FR |
| POLYPHOR | Gewerbestrasse 14 | 4123 | ALLSCHWIL | CH |
| POXEL | 200 Avenue Jean Jaurès | 69007 | LYON | FR |
| PRASSISI ISTITUTO DI RICERCA SIGMA TAU | Via Forlanini 1/3 | 20019 | SETTIMO MILANESE | IT |
| PRESTWICK CHEMICAL INC. | Bd Gonthier d'Andermach Parc d'Innovation | 67400 | ILLKIRCH | FR |
| PRIAXON AG | Gmunder Straße 37-37a | 81379 | MUNICH | DE |
| PRONOVA BIOPHARMA | P.O. Box 420 | 1327 | LYSAKER | NO |
| PROUS INSTITUTE FOR BIOMEDICAL RESEARCH | Rambla Catalunya 135, 3a-2a | 8037 | BARCELONA | ES |
| PROVENCE TECHNOLOGIES | 18 rue Marc Donadille- Les baronnies | 13013 | MARSEILLE | FR |
| PROXCYS BV | Bedrijvenweg 4 | 7883JH | NIEUW AMSTERDAM | NL |
| PROXIMAGEN | Building 250 Babraham Research Campus | CB22 3AT | CAMBRIDGE | GB |
| QIAGEN SA | 3 Avenue du Canada LP 809 | 91974 | COURTABOEUF CEDEX | FR |
| QUALITY ASSISTANCE SA | Technoparc de Thudinie 2 | 6536 | DONSTIENNES | BE |
| QUINTEN | 11 rue Galvani | 75017 | PARIS | FR |
| RADLEY'S DISCOVERY TECHNOLOGIES | Shire Hill, Saffron Walden | | ESSEX, CB11 3AZ | GB |
| REACH SEPARATIONS | BioCity Nottingham Pennyfoot Street | NG1 1GF | NOTTINGHAM | GB |
| REACTION BIOLOGY CORP. | 245 Amity Road | 6525 | WOODBIDGE, CT | US |
| RECKITT BENCKISER NV | avenue Reine Astrid, 164 | 1780 | WEMMEL | BE |
| RECORDATI S.P.A. | Via Civitali 1 | 20148 | MILANO | IT |
| REDX ONCOLOGY | Duncan Building RLUH | L69 3GA | LIVERPOOL | GB |
| REGIS TECHNOLOGIES INC. | 8210 Austin Avenue | IL 60053 | MORTON GROVE | US |
| RENTSCHLER | Erwin-Rentschler str. 21 | 88471 | LAUPHEIM | DE |
| RESEARCH CENTER FOR MOLECULAR MEDICINE (CEMM) | | | | |
| | Lazarettgasse 14 AKH BT 25.3 | 1090 | VIENNA | AT |
| RESEARCH CENTRE PRÍNCIPE FELIPE | C/ Eduardo Primo Yufera, 3 | 46012 | VALENCIA | ES |
| RESINDION | Via Roma 55 | 20082 | BINASCO | IT |
| RHODIA SA | 110, esplanade Charles de Gaulle | 92931 | PARIS LA DÉFENSE CDX | FR |
| RICERCA | 7528 Auburn Road | | CONCORD OHIO 44077 | US |
| RICHTER PLC | Gyomroi ut, 19/21 | 1103 | BUDAPEST | HU |
| RIKEN | 1-7-22 Suehiro | 230-0045 | YOKOHAMA | JP |
| ROTTAPHARM | Via Valosa di Sopra 9 | 20052 | MONZA | IT |
| ROUSSELOT | Kanaaldijk Noord 20-21 | 5691 NM | SON | NL |

RSC - MedChemComm



Royal Society of Chemistry, Thomas Graham House, Science Park,
Milton Road, Cambridge CB4 0WF, UK

Contact person: Richard Kelly

medchemcomm-rsc@rsc.org

Tel: +44 (0) 1223 432193 - Fax: +44 (0) 1223 430247

www.rsc.org/medchemcomm

Official journal of EFMC from Royal Society of Chemistry, publishing both highly-significant research in traditional areas of medicinal chemistry and cutting edge work in new or interdisciplinary areas. The journal brings new thinking to medicinal chemistry and challenges perceptions of what is possible in drug discovery

| | | | | |
|-------------------------|--|----------|------------------------|----|
| SAI ADVANTUM PHARMA LTD | 8-2-120/86/9/B, Luxor Park, Road No. 2 | 500 033 | BANJARAHILLS HYDERABAD | IN |
| SANOFI / CHINOIN LTD. | Tó utca 1-5 | 1045 | BUDAPEST | HU |
| SARTORIUS AG | Wender Landstrasse 94-108 | 37075 | GOETTINGEN | DE |
| SATORI PHARMACEUTICALS | 281 Albany St. | 2139 | CAMBRIDGE | US |
| SCHOTT GLAS | Hattenbergstrasse 10 | 55122 | MAINZ | DE |
| SCHRÖDINGER GMBH | Zeppelinstraße 73 | 81669 | MÜNCHEN | DE |
| SCIENTIFIC UPDATE | Maycroft Place Stone Cross Mayfield | | EAST SUSSEX TN20 6EW | GB |
| SCK.CEN | Boeretang 200 | 2400 | MOL | BE |
| SCYNEXIS | Post Office Box 12878 Research Triangle Park | | NC 27709-2878 | US |
| SEATTLE GENETICS | 21823 30th Drive Southeast | WA 98021 | BOTHELL | US |

SANOFI R&D



1, AVENUE PIERRE BROSSOLETTE – 91380 CHILLY-MAZARIN cedex
FRANCE

Contact person: Dominique Lesuisse

Dominique.Lesuisse@sanofi.com

Tel: : +33 (0) 1.60.49.68.57

www.sanofi.com

SANOFI FOCUSED ON PATIENTS' NEEDS

Over the years, Sanofi has evolved to meet the new challenges of healthcare worldwide.

Today, Sanofi is a global healthcare leader focused on patients. We listen to their needs, support them in their disease and treat them. Through our diversified portfolio of medicines, vaccines and innovative therapeutic solutions, we strive to protect the health and meet the needs of the world's 7 billion people.

| | | | | |
|---|---|---------|-------------|----|
| SELCIA LIMITED | Fyfield Business & Research Park Fyfield Road | CM5 0GS | ONGAR ESSEX | GB |
| SEPIATEC GMBH | Louis-Blériot-Strasse 5 | 12487 | BERLIN | DE |
| SERCOLAB BVBA | Weskaai 7 | 2170 | MERKSEM | BE |
| SESMOS LTD. | 3.12 CH Waddington Building | EH9 3JD | EDINBURGH | GB |
| SETARAM SA | 7 Rue de l'Oratoire | 69300 | CALUIRE | FR |
| SHANGHAI PHARMACEUTICAL HOLDING CO., LTD. | | | | |
| | 898 Ha Lei Road | 201203 | SHANGHAI | CN |
| SHIMADZU BENELUX | Burg. Etienne Demunterlaan 5 Bus 4 | 1090 | BRUSSELS | BE |

SIGMA ALDRICH



Pharmaceutical Research, 80 Rue de Luzais, 38297 St. Quentin-Fallavier
FRANCE

Contact person: Sylvie Carneiro - Business Solutions

Sylvie.carneiro@sial.com

Tel: +33 4 74 82 29 32 - Fax: +33 4 74 99 10 33

Mobile: +33 6 25 17 24 84

www.sigmaaldrich.com/chemistry.html

Sigma-Aldrich is a world leader in helping pharmaceutical and biotechnology companies develop innovative chemistry synthesis, structure confirmation and purity assessment solutions within the drug discovery workflow. To find out more visit sigmaaldrich.com/chemicalsynthesis

| | | | | |
|-----------------------------------|------------------------------------|---------------|----------------------------|----|
| SIMULATIONS PLUS INC. | 42505 10th Street West | CA 93534-7059 | LANCASTER | US |
| S-IN SOLUZIONI INFORMATICHE SRL | Via G. Ferrari 14 | 36100 | VICENZA | IT |
| SIRIUS ANALYTICAL INSTRUMENTS LTD | Riverside Forest Row Business Park | | FOREST ROW RH18 5DW SUSSEX | GB |
| SK BIOPHARMACEUTICALS | 325. Expo, Yuseong-gu | 305-712 | DAEJEON | KR |
| SOLVAY SA | Rue de Ransbeek 310 | 1120 | BRUSSELS | BE |

SPECS



www.specs.net

Bleiswijkseweg 55, 2712 PB Zoetermeer,
THE NETHERLANDS

Contact Person: Yulia Gerhardt-Tazikova, Business Development Manager

info@specs.net

Tel: +31 88 525 5111 Fax: +31 88 525 51 51

www.specs.net

Specs (Compound Handling B.V.) has over 27 years of experience in processing and handling of chemical compounds for the Life Science Industry worldwide. In addition to being a reliable partner as a supplier of high quality screening compounds, building blocks and natural products, Specs offers full compound management, procurement, cheminformatics, quality control and custom synthesis services.

| | | | | |
|------------------------------|--|---------------|---------|----|
| SPECTRUM CHEMICAL MFG. CORP. | 14422 S. San Pedro St. | CA 90248-2027 | GARDENA | US |
| SPIROCHEM AG | c/o ETH-Zurich Wolfgang-Pauli-Strasse 10 | 8093 | ZURICH | CH |

| | | | | |
|-----------------------------------|---------------------------------------|---------------|------------------------------|----|
| SPLICOS | 1919 Route Mende | 34000 | MONTPELLIER | FR |
| SPRINGER VERLAG | Tiergartenstrasse 17 | 69121 | HEIDELBERG | DE |
| SPSS SCIENTIFIC SOFTWARE GMBH | Schimmelbuschstrasse 25 | 40699 | ERKRATH | DE |
| SQUARIX | Elbstraße 10 | 45768 | MARL | DE |
| STALLERGENES S.A. | 6 Rue Alexis de Tocqueville | 92183 | ANTONY CEDEX | FR |
| STREM CHEMICALS | 15, rue de l'Atome, Z.I. | 67800 | BISCHHEIM | FR |
| SUMMIT PHARMACEUTICALS EUROPE LTD | Vinher's Place 68 Upper Thames Street | | LONDON EC4V 3BJ | GB |
| SUNESIS PHARMACEUTICALS INC. | 341 Oyster Point Boulevard. | | SOUTH SAN FRANCISCO CA 94081 | US |
| SUNOVION PHARMACEUTICALS INC. | 84 Waterford Drive | MA 01752-7010 | MARLBOROUGH | US |
| SURECHEM - DIGITAL SCIENCE | 4 Crinan Street | N1 9XW | LONDON | GB |

SYGNATURE DISCOVERY LTD



Sygnature Discovery, BioCity, Pennyfoot Street, Nottingham NG1 1GF

Contact person: Dr Paul Clewlow

busdev@sygnaturediscovery.Com

Tel: +44 115 9415401

www.sygnaturediscovery.com

Sygnature is the UK's largest independent provider of integrated drug discovery expertise. Core capabilities include medicinal chemistry, in vitro bioscience, computational chemistry, informatics and DMPK.

Experienced and highly qualified scientists utilize novel technologies and innovative ways of working that ensures we deliver on the most complex research projects.

| | | | | |
|--------------------------------------|---|----------|---------------------------|----|
| SYNCOM BV | Kadijk 3 | 9704 CE | GRONINGEN | NL |
| SYNGENTA | Schaffhauserstrasse WST-810.3.44 | CH-4332 | STEIN | CH |
| SYNOPTICS LTD | Beacon House Nuffield Road | | CAMBRIDGE CB4 1TF | GB |
| SYNTAPHARM | Xantener Strasse 1-3 | 45479 | MUELHEIM AN DER RUHR | DE |
| SYNTHELOR | Technopôle de Brabois 13, rue du Bois de la Champelle | 54500 | VANDEULVRE-LES-NANCY | FR |
| SYNTHONIX LTD | 1010 Cambourne Business Park | CB23 6DP | CAMBRIDGE | GB |
| SYSMEX BELGIUM | Park Rozendal, BuildingA Terhulpeestw. 6a | 1560 | HOELAART | BE |
| TAIHO PHARMACEUTICAL CO., LTD. | 3 Okubo | 300-2611 | TSUKUBA, IBARAKI | JP |
| TAKEDA PHARMACEUTICALS | 40 Landsdowne Street | MA 02139 | CAMBRIDGE | US |
| TAROS CHEMICALS GMBH & CO. KG | Emil Figge Strasse 76a | 44227 | DORTMUND | DE |
| TB ALLIANCE | 40 Wall Street, 24th Floor | NY 10005 | NEW YORK | US |
| TCG LIFE SCIENCES LIMITED | 52B Okhla Industrial Area Phase 3 | 110020 | NEW DELHI | IN |
| TCI EUROPE | Boerenveldseweg 6 Haven 1063 | 65760 | ZWIJNDRECHT | DE |
| TECAN GROUP LTD | Seestrasse 103 | 8708 | MAENNEDORF | CH |
| TEIJIN PHARMA LIMITED | 4-3-2, Asahigaoka, Hino | 191-8512 | TOKYO | JP |
| TES PHARMA S.R.L. | via Palmiro Togliatti 20 | 6073 | CORCIANO | IT |
| TEVA PHARMACEUTICAL INDUSTRIES LTD. | Hatrufa 12 | 4250483 | NETANYA | IL |
| THALESNANO | Zahony u 7 | 1031 | BUDAPEST | HU |
| THERABEL PHARMA NV-SA | Rue Egide Van Ophem 108 | 1180 | BRUXELLES | BE |
| THERAVANCE INC. | 901 Gateway Blvd | 94080 | SOUTH SAN FRANCISCO | US |
| THERMO FISHER SCIENTIFIC | Industriezone III Industrielaan 27 | 9320 | EREMBODEGEM | BE |
| THEME PUBLISHERS | Rüdigerstrasse 14 | 70469 | STUTTGART | DE |
| TOCRIS BIOSCIENCE | Tocris House, 10 Centre Moorend Farm Avenue Avonmouth | BS11 0QL | BRISTOL | GB |
| TOPIVERT PHARMA LTD | Level 1 Bessemer Building Prince Consort Road | SW72BP | LONDON | GB |
| TOSOH BIOSCIENCE GMBH | Zettachring 6 | 70567 | STUTTGART | DE |
| TUMOR BIOLOGY CENTER | Breisacherstrasse 117 | 79106 | FREIBURG | DE |
| UCB BIOPHARMA SA | Allée de la Recherche 60 | 1070 | BRUSSELS | BE |
| UNILEVER | Olivier van Noortlaan 120 Postbus 114 | 3130 AC | VLAARDINGEN | NL |
| VALDEPHARM | Parc Industriel d'Incarville BP 606 | 27160 | VAL DE REUIL | FR |
| VERNALIS | Granta Park Great Abington | CB21 6GS | CAMBRIDGE | GB |
| VERTEX PHARMACEUTICALS (CANADA) INC. | 275 Armand Frappier | HTV 4A7 | LAVAL, QUEBEC | CA |
| VFP THERAPIES | Rue François Couperin | 76000 | ROUEN | FR |
| VIPERGEN | Gammel Kongevej 23 | 1610 | COPENHAGEN | DK |
| VITAS-M LABORATORY | Hodynski blv. 15 | 125252 | MOSCOW | RU |
| VIVALIS | 6 rue Alain Bombard | 44621 | SAINT HERBLAIN | FR |
| WATERS CORPORATION | BP 608 | 78056 | SAINT QUENTIN EN YVELINES | FR |
| WIL RESEARCH B.V. | Hambakenwetering 7 | 5231DD | 'S-HERTOGENBOSCH | NL |

WILEY-VCH VERLAG GMBH & CO. KGAA

WILEY-VCH

Boschstrasse 12 69469 Weinheim - GERMANY
info@wiley-vch.de
Tel: +49(0)6201/606-0 - Fax: +49(0)6201/606-328
www.wiley.com

Wiley is a global provider of content-enabled solutions to improve outcomes in research, education and professional practice with online tools, journals, books, databases, reference works and laboratory protocols. With strengths in every major academic, scientific and professional field, and strong brands including Wiley Blackwell and Wiley VCH, Wiley proudly partners with over 800 prestigious societies representing two million members.

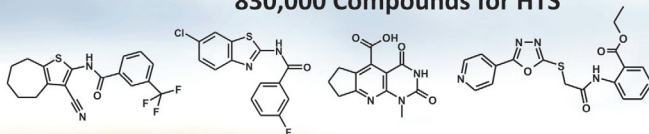
| | | | | |
|------------------------|-------------------------------------|----------|----------------|----|
| WUXI APPTec, INC. | 2540 Executive Drive | MN 55120 | ST. PAUL | US |
| XELLIA PHARMACEUTICALS | Harbizalléen 3 | 212 | OSLO | NO |
| XENOGENESIS LTD. | BioCity Nottingham Pennyfoot Street | NG1 1GF | NOTTINGHAM | GB |
| XENTON | Iconix Park London Road Pampisford | CB22 3EG | CAMBRIDGE | GB |
| YMC EUROPE | Schöttmannshof 19 | 46539 | DINSLAKEN | DE |
| ZENTIVA K.S. | U Kabelovny 130 | 102 37 | PRAGUE | CZ |
| ZEOCHEM AG | Seestrasse 108 | 8707 | UETIKON AM SEE | CH |
| ZINSSER ANALYTIC | Eschborner Landstrasse 135 | 60489 | FRANKFURT/MAIN | DE |
| ZOBIO BV | Einsteinweg 55 | 2333CC | LEIDEN | NL |
| ZOETIS | 333 Portage St. | 49007 | KALAMAZOO | US |



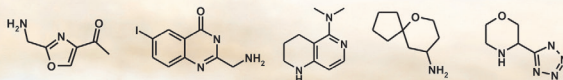
LIFE CHEMICALS

providing innovation to medicinal chemistry

830,000 Compounds for HTS



11,000 Building Blocks



Over 60 Targeted Libraries

6 Fragment Libraries

Custom Synthesis

Computational Chemistry

Contacts:

Europe: +49 089 724 936 28

Olga.Grintsova@lifechemicals-eu.com

USA: +1 203 645 8468

George.Bondar@lifechemicals.com

www.lifechemicals.com